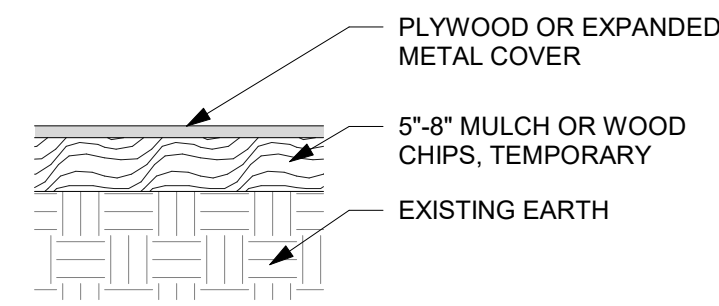
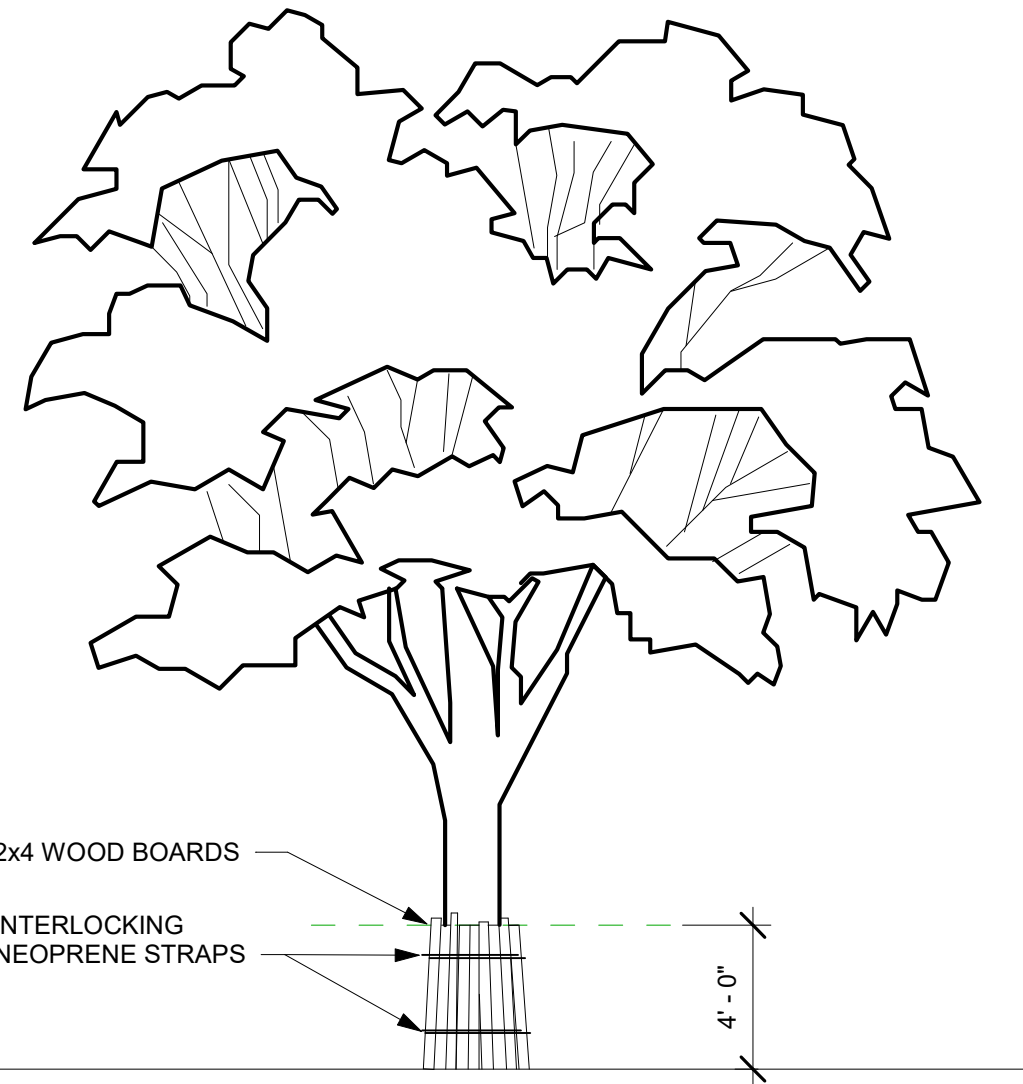


Tree Schedule									
ID	Common Name	Scientific Name	# of Trunks	DBH/DS H	Dripline	Condition	Retain	Comments	
1	DOUGLAS FIR	Pseudotsuga menziesii	1	34.0"	16' - 0"	GOOD	Yes	EXCEPTIONAL	
2	DOUGLAS FIR	Pseudotsuga menziesii	1	40.0"	16' - 0"	GOOD	Yes	EXCEPTIONAL	
3	DOUGLAS FIR	Pseudotsuga menziesii	1	12.0"	12' - 0"	GOOD	Yes		
4	DOUGLAS FIR	Pseudotsuga menziesii	1	12.0"	12' - 0"	GOOD	Yes		
5	DOUGLAS FIR	Pseudotsuga menziesii	1	32.0"	16' - 0"	GOOD	Yes	EXCEPTIONAL	
6	DOUGLAS FIR	Pseudotsuga menziesii	1	28.0"	16' - 0"	GOOD	Yes		
7	DOUGLAS FIR	Pseudotsuga menziesii	1	28.0"	16' - 0"	GOOD	Yes		
8	DOUGLAS FIR	Pseudotsuga menziesii	1	36.0"	18' - 0"	GOOD	Yes	EXCEPTIONAL	
9	DOUGLAS FIR	Pseudotsuga menziesii	0	30.0"	16' - 0"	GOOD	Yes	EXCEPTIONAL	
10	DOUGLAS FIR	Pseudotsuga menziesii	1	36.0"	18' - 0"	GOOD	Yes	EXCEPTIONAL	
11	DOUGLAS FIR	Pseudotsuga menziesii	1	24.0"	14' - 0"	GOOD	Yes		
12	DOUGLAS FIR	Pseudotsuga menziesii	1	27.0"	18' - 0"	GOOD	Yes	TRUNK PROTECTION & ROOT PROTECTION	
13	DOUGLAS FIR	Pseudotsuga menziesii	1	34.0"	18' - 0"	GOOD	Yes	EXCEPTIONAL, TRUNK PROTECTION & ROOT PROTECTION	
14	DOUGLAS FIR	Pseudotsuga menziesii	1	28.0"	18' - 0"	GOOD	Yes		
15	DOUGLAS FIR	Pseudotsuga menziesii	1	18.0"	16' - 0"	GOOD	Yes		
16	DOUGLAS FIR	Pseudotsuga menziesii	1	24.0"	14' - 0"	GOOD	Yes		
17	DOUGLAS FIR	Pseudotsuga menziesii	1	26.0"	16' - 0"	GOOD	Yes		
18			1	6.0"	12' - 0"	GOOD	Yes	OFFSITE	
19	DOUGLAS FIR	Pseudotsuga menziesii	1	26.0"	16' - 0"	GOOD	Yes	OFFSITE	
20	DOUGLAS FIR	Pseudotsuga menziesii	1	26.0"	16' - 0"	GOOD	Yes	OFFSITE	
21	PINE	Pinus	1	12.0"	12' - 0"	GOOD	Yes	OFFSITE	
22	PINE	Pinus	1	8.0"	12' - 0"	GOOD	Yes	OFFSITE	
23	PINE	Pinus	1	16.0"	14' - 0"	GOOD	Yes	OFFSITE	
24	DOUGLAS FIR	Pseudotsuga menziesii	1	14.0"	12' - 0"	GOOD	Yes	OFFSITE	
25	DOUGLAS FIR	Pseudotsuga menziesii	1	18.0"	14' - 0"	GOOD	Yes	OFFSITE	



2 Tree Planting Protection - Traffic Cover  
Not To Scale

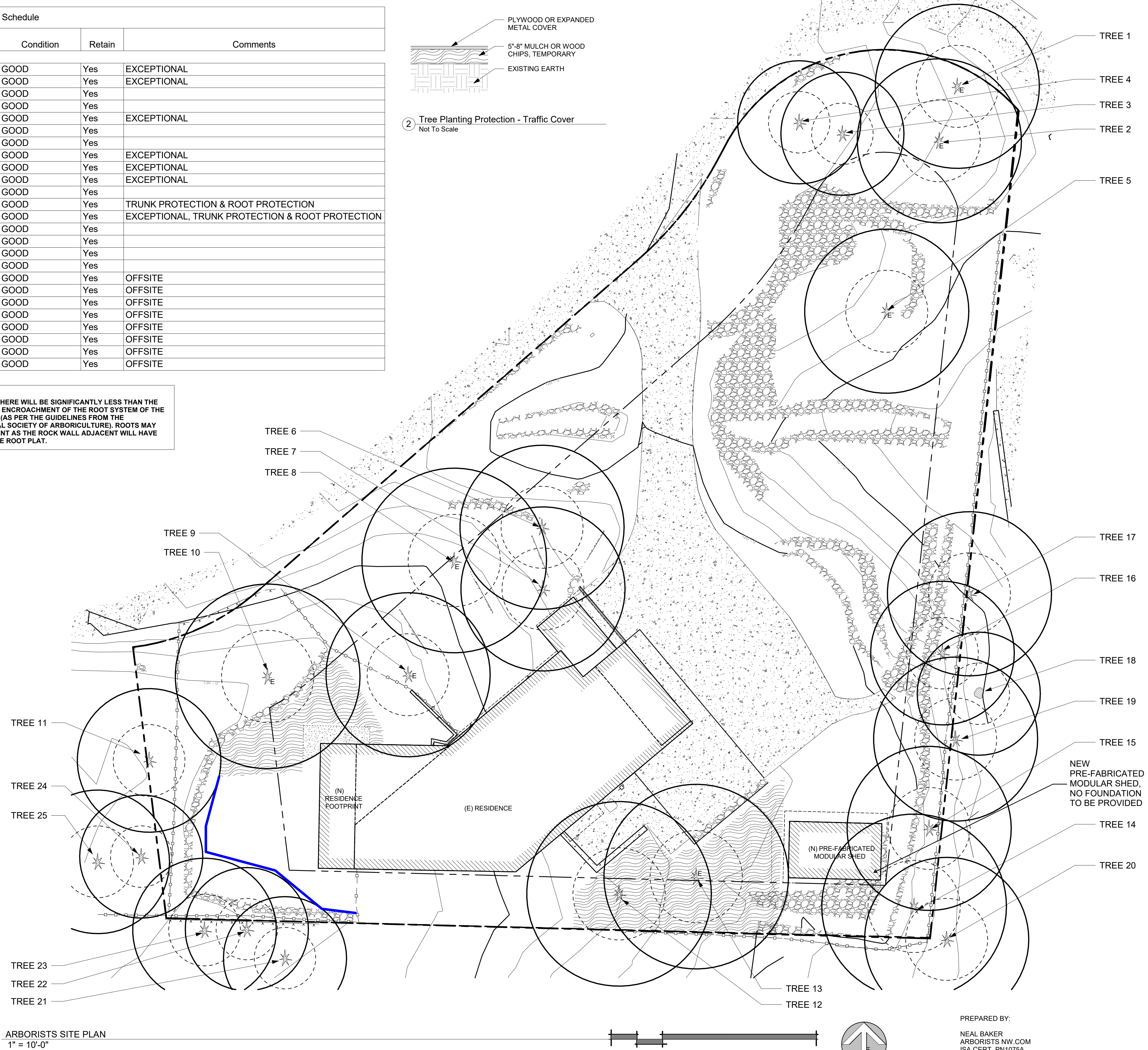
NOTE:  
TREE 9 & 10: THERE WILL BE SIGNIFICANTLY LESS THAN THE ALLOWED 25% ENCROACHMENT OF THE ROOT SYSTEM OF THE NEARBY TREE (AS PER THE GUIDELINES FROM THE INTERNATIONAL SOCIETY OF ARBORICULTURE). ROOTS MAY NOT BE PRESENT AS THE ROCK WALL ADJACENT WILL HAVE DEFORMED THE ROOT PLAT.



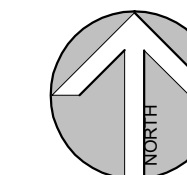
3 Trunk Protection  
Not To Scale

Symbol	Description
	TREE DRIP LINE
	EVERGREEN TREE
	DECIDUOUS TREE
	TREE TO BE REMOVED (NONE PROPOSED)
	TREE PROTECTION FENCING MUST BE PLACED PRIOR TO CONSTRUCTION ACTIVITY
	"E" REPRESENTS EXCEPTIONAL TREES. IN EXCESS OF 36" DBH
	6"-8" DEEP MULCH

4 Symbols Legend  
Not To Scale



ARBORISTS SITE PLAN  
1" = 10'-0"



PREPARED BY:  
NEAL BAKER  
ARBORISTS NW.COM  
ISA CERT. PN1075A  
TRAQ ISA (TREE RISK ASSESSMENT QUALIFIED)  
MEMBER AREA & SOCA  
PH: 206 779 2579

arboristsNW

Arborists NW is a full spectrum arboricultural, consulting and landscape design and installation provider. When you think tree and landscape services, think Arborists NW.

ONLINE: <https://arboristsnw.com/>  
PHONE: 206-779-2579  
EMAIL: [neal@arboristsnw.com](mailto:neal@arboristsnw.com)

No.	Description	Date

**ACKLEY RESIDENCE**  
 9603 SE 61ST PLACE, MERCER ISLAND, WA 98040

ACKLEY RESIDENCE

ARBORIST TREE PLAN

Project number	25006
Date	
Drawn by	CW
Checked by	NB

**X100**

Scale As indicated